

BALL BEARING ECCENTRICS

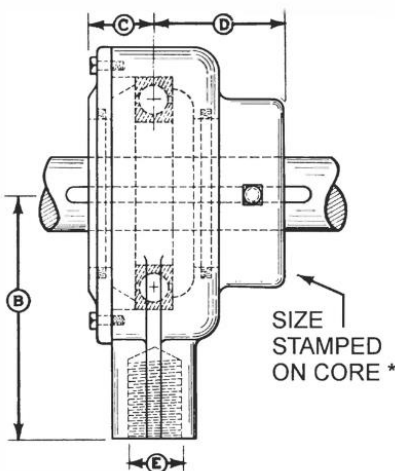
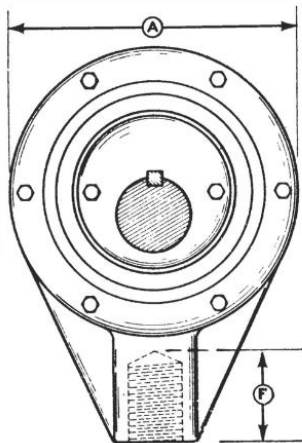
Made in various sizes to fit any required application. Stock list for immediate delivery. Special sizes available on request.

STANDARD FEATURES:

- Cast iron construction
- Enamel painted outer surfaces
- Bolt together assembly
- Radial ball bearing
- Felt seals

OPTIONAL FEATURES:

- Neoprene seals
- Alternate stem sizes (E Dim.)
- Alternate keyway sizes
- Alternate surface coatings



* When "N" follows last digit it indicates Neoprene Seals.

Dimensions in inches unless otherwise noted.

Ecc. No.	Shaft Dia.	Throw	Travel	Bearing No.	Bearing **Cap (in LBF)	A	B	C	D	NC Thread E	F	Key Seat	Lbs. Each
L1-2	1	1/8	1/4	9112K	2,470	4 3/4	3 3/4	1	1 3/4	3/4	1 1/4	1/4	9
L1-4	1	1/4	1/2										
L1-6	1	3/8	3/4										
L1-8	1	1/2	1										
L1-10	1	5/8	1 1/4										
L13-2	1 3/16	1/8	1/4										
L13-3	1 3/16	3/16	3/8										
L13-4	1 3/16	1/4	1/2										
L13-6	1 3/16	3/8	3/4										
L13-8	1 3/16	1/2	1										
L14-4	1 1/4	1/4	1/2										
L14-6	1 1/4	3/8	3/4										
1-6	1	3/8	3/4	212K	4,340	5 1/2	4 1/4	1 1/4	2 1/4	3/4	1 1/2	1/4	14
13-3	1 3/16	3/16	3/8										
13-4	1 3/16	1/4	1/2										
13-6	1 3/16	3/8	3/4										
13-8	1 3/16	1/2	1										
14-6	1 1/4	3/8	3/4	214K	5,200	6 1/8	4 3/4	1 1/2	2 1/4	1	1 1/2	3/8	18
14-8	1 1/4	1/2	1										
16-6	1 3/8	3/8	3/4										
16-8	1 3/8	1/2	1										
17-2	1 7/16	1/8	1/4										
17-3	1 7/16	3/16	3/8										
17-4	1 7/16	1/4	1/2										
17-6	1 7/16	3/8	3/4										
17-8	1 7/16	1/2	1										
17-10	1 7/16	5/8	1 1/4										
111-3	1 11/16	3/16	3/8										
111-4	1 11/16	1/4	1/2										
111-6	1 11/16	3/8	3/4										
18-4	1 1/2	1/4	1/2										
18-6	1 1/2	3/8	3/4										
18-8	1 1/2	1/2	1										
111-8	1 11/16	1/2	1	216W	8,500	7	5 1/4	1 3/4	2 3/4	1	1 5/8	3/8	25
111-10	1 11/16	5/8	1 1/4										
115-2	1 15/16	1/8	1/4										
115-3	1 15/16	3/16	3/8										
115-4	1 15/16	1/4	1/2										
115-6	1 15/16	3/8	3/4										
115-8	1 15/16	1/2	1										
23-6	2 3/16	3/8	3/4										
115-10	1 15/16	5/8	1 1/4										
115-12	1 15/16	3/4	1 1/2										
23-8	2 3/16	1/2	1	219W	12,500	8 1/2	6 3/4	1 7/8	3 1/4	1 1/4	2 1/4	1/2	43
23-10	2 3/16	5/8	1 1/4										
24-3	2 1/4	3/16	3/8										
24-6	2 1/4	3/8	3/4										
24-8	2 1/4	1/2	1										
24-10	2 1/4	5/8	1 1/4										
27-4	2 7/16	1/4	1/2										
27-6	2 7/16	3/8	3/4										
27-8	2 7/16	1/2	1										
27-11	2 7/16	11/16	1 3/8										
211-4	2 11/16	1/4	1/2	220W	14,000	9	7 3/4	2 1/8	4	*1 1/4	2 1/2	1/2	64
211-8	2 11/16	1/2	1										
211-9	2 11/16	9/16	1 1/8										
27-12	2 7/16	3/4	1 1/2										
215-6	2 15/16	3/8	3/4										
215-8	2 15/16	1/2	1	222W	16,500	10	8 1/2	2 3/8	4 1/2	1 1/2	2 3/4	1/2	84
215-10	2 15/16	5/8	1 1/4										
215-24	2 15/16	1 1/2	3										
37-4	3 7/16	1/4	1/2										
315-6	3 15/16	3/8	3/4										
415-6	4 15/16	3/8	3/4	23032	19,000	12	11 3/8	2 1/2	4	2	4	1	150

**Bearing capacity (in pound force) determined at 300 RPM.

*Also available in 1 1/2 inches; must specify.