

# RUBBER MOUNTED SHAKER HANGERS



LH6450

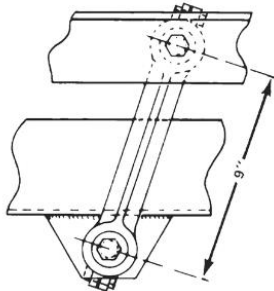


GH2013

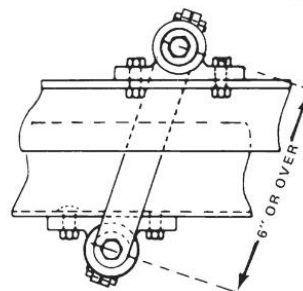
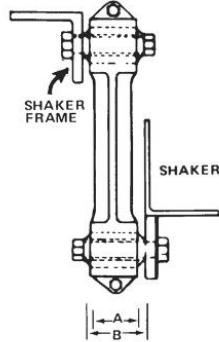


GBH2013

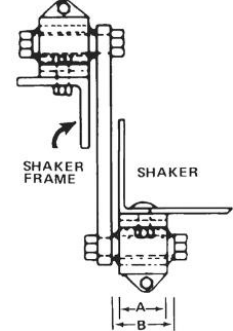
## SUGGESTED METHODS OF INSTALLATION



TYPE GH2013 AND LH6450

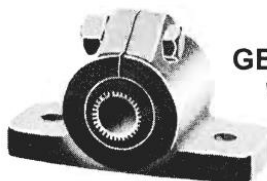


TYPE GBH2013

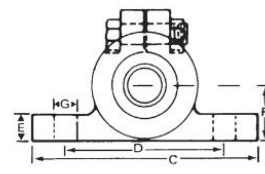
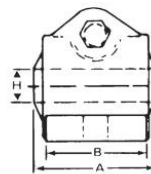


DIMENSIONS IN INCHES

Type	Centers	Load Cap Per Hanger	A Dim.	B Dim.	Recommended Limit of Travel	Max. Stroke Per Min.
GBH2013	9	175	2	2 <sup>5</sup> / <sub>16</sub>	1 <sup>1</sup> / <sub>2</sub>	800
GH2013	8 or 9	175	2	2 <sup>5</sup> / <sub>16</sub>	1 <sup>1</sup> / <sub>2</sub>	1000
LH6450	8 or 9	175	2	2 <sup>5</sup> / <sub>8</sub>	1 <sup>1</sup> / <sub>2</sub>	1000



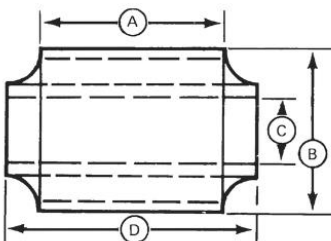
GB2013 Bearings Only with Rubber Bushings



DIMENSIONS IN INCHES

Type	A	B	C	D	E	F	G	H	Load Cap. Per. Hanger
GB2013	2 <sup>5</sup> / <sub>16</sub>	1 <sup>7</sup> / <sub>8</sub>	4 <sup>1</sup> / <sub>4</sub>	3	9 <sup>9</sup> / <sub>16</sub>	1 <sup>1</sup> / <sub>16</sub>	7 <sup>7</sup> / <sub>16</sub>	5 <sup>5</sup> / <sub>8</sub>	175 lbs.

# RUBBER MOUNTS FOR HANGERS & CONNECTING ARMS



BUSHINGS ONLY FOR HANGERS AND CONNECTING ARMS - DIMENSIONS IN INCHES

No.	A	B	C	D
H-5013	2	1 <sup>1</sup> / <sub>2</sub> Rnd	5 <sup>5</sup> / <sub>8</sub>	2 <sup>5</sup> / <sub>8</sub>
H-5017	1 <sup>1</sup> / <sub>2</sub>	1 <sup>1</sup> / <sub>2</sub> Rnd	5 <sup>5</sup> / <sub>8</sub>	2 <sup>1</sup> / <sub>8</sub>
G-2013	2	1 <sup>1</sup> / <sub>4</sub> Rnd	5 <sup>5</sup> / <sub>8</sub>	2 <sup>5</sup> / <sub>16</sub>
C-5950* †	1 <sup>1</sup> / <sub>4</sub>	2 <sup>3</sup> / <sub>8</sub> Rnd	1	2 <sup>1</sup> / <sub>4</sub>
J-375*	3	3 <sup>1</sup> / <sub>8</sub> Rnd	1 <sup>1</sup> / <sub>4</sub>	3 <sup>3</sup> / <sub>4</sub>
H-6450*	1 <sup>5</sup> / <sub>16</sub>	1 <sup>3</sup> / <sub>4</sub> Sq.	5 <sup>5</sup> / <sub>8</sub>	2 <sup>5</sup> / <sub>8</sub>

\* Does not have steel outer sleeve.

† Replacement for J-5950. Inner steel sleeve not required.

